

## 10 WASTE DISPOSAL

### 10.1 INTRODUCTION

The first Limerick/Clare/Kerry Waste Management Plan (2001) aimed to reduce the Region's over dependence on landfill through waste prevention, re-use and recycling. The Plan set a target to reduce landfilling of the total household, commercial and industrial waste arisings to 14% for 2013.

Three Local Authority landfills were in operation at the time of the previous Waste Management Plan. According to weighbridge records, of the total 368,010 tonnes generated in the Region, a total of 135,181 tonnes (37%) was landfilled in the Region. This percentage would indicate that waste is being exported for landfill outside the Region.

### 10.2 QUANTITIES OF WASTE LANDFILLED

The total quantities of household, commercial and industrial waste disposed of to landfill in the Region in 1998 and 2004 are shown in Table 10.1.

**Table 10.1 Municipal & Industrial Waste Disposal to Landfill in the Region 1998 – 2004**

Waste Type	Tonnes Per Annum
Waste Landfilled 1998	223,000*
Waste Landfilled 2004	135,181**
Difference %	39%

Source:

\*Limerick/Clare/Kerry Waste Management Plan (2001)

\*\*Local Authority landfill weighbridge records (2004).

Table 10.1 shows that although the level of waste disposal in the Region has decreased from 1998, landfilling remains the primary disposal route for municipal and industrial waste in the Region.

Since the 2001 Plan, controls have been put in place on the types of materials acceptable at landfill facilities. Landfills can no longer accept C&D waste for disposal, except topsoil, which can be used for remediation purposes.

Similarly, municipal sludge disposal at landfill facilities is being phased out.

### 10.3 HOUSEHOLD WASTE DISPOSAL

The total quantity of household waste landfilled in 2004 represents 56% of the total household waste arisings in 2004.

The movement of non-hazardous household wastes into and out of the Limerick/Clare/Kerry Region can be difficult to identify as almost 71% of the household waste collected in the Region in 2004 was managed by the private sector. The private sector operating in the Region comprises a mix of local, regional and national waste collectors and waste can often be transported across Regional boundaries for treatment or disposal in neighbouring regions.

Table 10.2 summarises the movement of non-hazardous waste quantities into and out of the Region for household, commercial, industrial, and C&D waste as recorded by the Local Authorities in 2003. The quantities shown represent the majority of the waste movements into and out of the Region.

**Table 10.2 Inter-Regional Non-Hazardous Waste Movements in the Region (2003)\***

Waste Type	Quantity Imported into Region	Quantity Exported from Region
Household	650	7,384
Commercial	0	15,076
C&D	5,567	69
Industrial	64,926	65,730
<b>Total</b>	<b>71,143</b>	<b>88,190</b>

Source: National Waste Database Returns for each Local Authority, 2003.

\*Data not available for 2004

### 10.4 COMMERCIAL AND INDUSTRIAL WASTE DISPOSAL

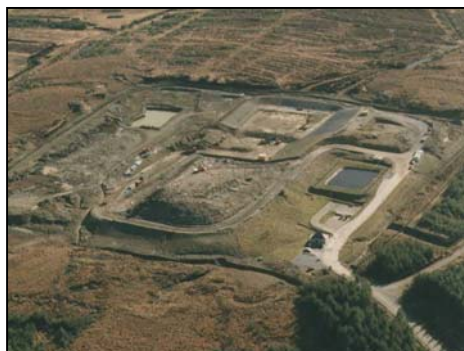
The quantity of mixed commercial and industrial waste landfilled in the Region in 2004 has decreased since 1998 and represents 21% of the total collected commercial and industrial arisings. Overall the level of commercial and industrial waste generated in the Region is

difficult to quantify, as arisings are often not recorded through Local Authority procedures. The increase in the cost of landfill since the last Plan has encouraged the private sector to seek alternative treatment outlets. Landfill is often not an option for commercial and industrial waste due to the heterogeneous nature of this waste stream.

## 10.5 LANDFILLS IN OPERATION

As with the rest of the country each of the four Local Authorities in the Region is dependant on landfill for waste disposal. There are currently three landfills in operation in the Region:

- Gortadroma Landfill, County Limerick
- Ballyduff beg Landfill, County Clare
- North Kerry Landfill, Kerry.



North Kerry Landfill

Doora landfill, in County Clare, closed in June 2001 and has been replaced by Ballyduff Beg Landfill which opened in September 2002 with a capacity of 1 million m<sup>3</sup>.

Gortadroma landfill has remaining capacity of approximately 800,000 tonnes. Limerick County Council has received from the EPA an extension. The extension will cater for over 1 million tonnes of waste.

The North Kerry Landfill is currently estimated to have a remaining capacity of approximately of 1,100,000 tonnes.

In addition to the Local Authority landfills, there is also a large private landfill in operation at the Aughinish Alumina plant in Limerick for the disposal of wastes generated from the industrial process such as salt cakes, aqueous sludges, red mud and sand scale.

The E.S.B. Moneypoint electricity generation station disposed of approximately 125,410 tonnes of ash in 2003 to their dedicated landfill at Moneypoint. The remaining quantity was sent for recovery.

### 10.5.1 Landfill Gate Fees

Gate fees at the Local Authority landfills range from €115 - €150 per tonne in the Region. These fees include the €15/t landfill levy.

### 10.5.2 Remaining Void Capacity

Details of each facility and their remaining capacities are outlined in Table 10.3 below.

**Table 10.3 Remaining Landfill Capacities in Limerick/Clare/Kerry**

Landfill Facility	Gortadroma Landfill	Ballyduff Beg Landfill	North Kerry Landfill	Regional Total
Remaining Capacity in Tonnes	800,000	575,124	1,100,000	<b>2,475,124</b>

### 10.5.3 Closed Landfills

The Waste Management Act 1996 Article 22(7)(h) requires information to be collected and held by Local Authorities on all former disposal sites and presented in the Waste Management Plan. Table 10.4 is a register of landfill sites, which closed since the 1960s, within the Limerick/Clare/Kerry Region for the purposes of identifying what, if any, remedial measures are required to be carried out at the sites.

Landfills currently in operation are regulated by the EPA and closure, restoration, monitoring and aftercare is determined by the terms of the

Waste Licence. In general sites in operation up to and during the 1990's have been closed and capped/ restored by the Local Authorities or the private operator. Local Authority landfills are typically restored by means of soil capping and in some cases may serve a use as public open spaces.

The Local Authorities in the Limerick/Clare/Kerry Region in accordance with the Section 60 Policy Guidance Note as issued by the Minister for Environment, Heritage and Local Government on May 3, 2005 will generate an inventory and where necessary will carry out, inter alia, an inventory and risk assessment of all non-licensed closed landfills where disposal or recovery activities have taken place between 1977 and 1996.

**Table 10.4 Register of Closed Landfills in Limerick/Clare/Kerry**

County	Landfill	Year Closed
Limerick City	Longpavement, Ballynanty	1998
	Old Landfill, Dockroad,	
Limerick County	Doon (1) Kilmoylan Lower	1964
	Ballyroe Lower, Kilfinnane	1970
	Ballylanders, Griston Bog	1971
	Knocklong, Knocklong East	1972
	Herbertstown, Moohane,	1973
	Bruff Newtown	1974
	Askeaton, Newbridge road	1979
	Glin, Demesne	1980
	Pallaskenry, Kilmacat	1980
	Killmallock (2), Tankardstown	1981
	Hospital, Gotoon	1982
	Athea, Glin road	1984
	Croom (2) landfill, Tooreen	1984
	Doon (2) Lackanagoneeny	1985

County	Landfill	Year Closed
	Newcastle West, Churchtown,	1986
	Ballysteen, Ballinvoher,	1987
	South Hill, Rathbane North	1987
	Doon (3) Knockacarriga	1988
	Rathkeale, Ballingrane,	1991
	Adare, Blackabby road	1992
	Dromcollogher, Carroward West,	1992
	Cappamore, Ballycusowen	1994
	Killmallock, Coolroe,	1995
	Abbeyfeale, Knockbrack	1996
	Croom (1), Morenane	1999
	Kilfinane, Ballinacourty,	1999-2000
	Castletroy, Newcastle,	1999-2000
	Newcastle West, Feohanagh	2005
Kerry	Ardfert	1980
	Rockfield	1988
	Listowel	1989
	Sneem	1990
	Tralee	1994
	Dingle	1996
	Leanmore	1996
	Ahascra	1997
	Coolcaslagh	1999
	Milltown	1999
	Kenmare	1999
	Caherciveen	1999
	Killorglin	Due to close in 2006
Clare	Lisdoonvarna	Late 1970s-

<b>County</b>	<b>Landfill</b>	<b>Year Closed</b>
		1980
	Milltown Malbay	Late 1970s-1980
	Kilmihil	1980s
	Corofin	1980s
	Kilrush	1992
	Ennistymon	1997
	Whitegate	1998
	Shannon Airport	1998
	Lisdeen	1999
	Doora	2001